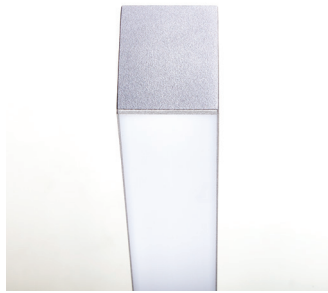


SYSTEM 50



Direct Illumination

Delivered Lumens per meter	1134	1864	2560	3150
System Watts per meter	16	34	24	31
CRI	80+	90+	HO 80+	HO 80+
LED's divisible by	100mm	50mm	140mm	140mm

General Specifications

Materials - Extruded aluminium body | polycarbonate diffuser

Optics - opal flat diffuser | opal U diffuser

Warranty - 5 years

Mounting - Surface mounted | Trimless Recessed | Suspended

Accessories - End caps | joiners | suspension | mitered corners | coverplate | linear downlights

Luminaire Length - Custom lengths made to order divisible as per above

LED Specifications

Colour Temperature - 3000K | 4000K

Colour Deviation - 3 x SDCM

Lifetime - 80+ - L80B10 50,000hours

- HO 80+ - L80B10 72,000hours

- 90+ - L80B10 60,000hours

Driver Specifications (integral)

Dimming - Non dimmable | DALI dimmable | Casambi

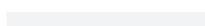
Custom Luminaire Modifications - 2700K | white tunable | RGBW | IP54 | screwless endcaps (pictured above)
integrated linear downlights | integrated track spots | integrated pendant luminaires

Finishes

Black



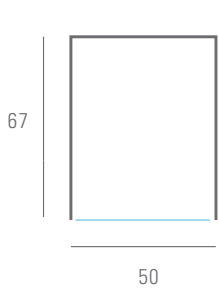
White



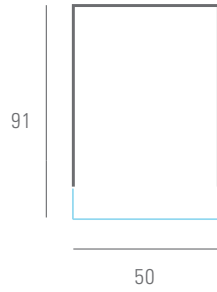
Custom Powdercoat



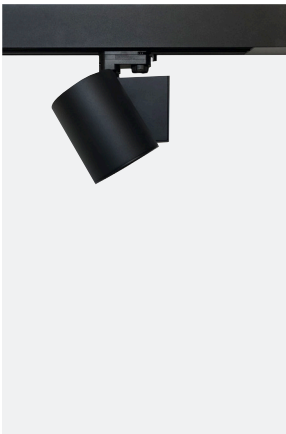
SK50
flat diffuser



SK50
U diffuser



CUSTOM LUMINAIRE MODIFICATIONS



integrated track lights



integrated pendant



integrated linear downlights

HOW TO ORDER

SK50 . 34 . 93 . F . XXXX . 61 . W

profile . wattage per meter . CRI CCT . lens type . profile length in mm . dimming type . colour finish



Street Address:
39 Tinning Street, Brunswick,
Victoria, 3056, Australia

Postal Address:
PO BOX 5084
Moreland West VIC 3055

T +61 3 9222 5522
www.elslighting.com.au

