



Direct Illumination

Delivered Lumens per meter	690	1020	682	1135	1570
System Watts per meter	10.5	15.8	14.5	25	35
CRI	80+	80+	90+	90+	90+
LED's divisible by	100mm	100mm	50mm	50mm	50mm

General Specifications

Materials - Extruded aluminium body | polycarbonate diffuser

Optics - opal flat diffuser | opal U diffuser

Warranty - 5 years

Mounting - Recessed

Accessories - End caps | joiners | mitered corners

Luminaire Length - Custom lengths made to order divisible as per above

LED Specifications

Colour Temperature - 3000K | 4000K

Colour Deviation - 3 x SDCM

Lifetime - 80+ - L80B10 50,000hours

- 90+ - L80B10 60,000hours

Driver Specifications (remote)

Dimming - Non dimmable | DALI dimmable | Casambi

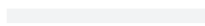
Custom Luminaire Modifications - 2700K | RGBW | white tunable | IPX4 |

Finishes

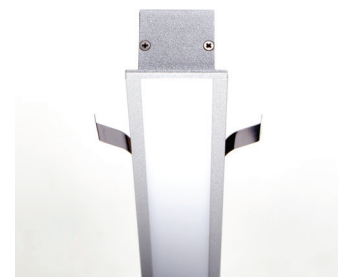
Black



White

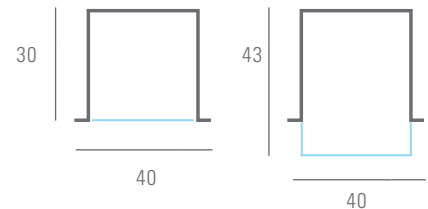


Custom Powdercoat



SL40 flat diffuser

SL40 U diffuser



HOW TO ORDER

SL40

profile

35

wattage per meter

93

CRI CCT

F

lens type

XXXX

profile length in mm

61

dimming type

W

colour finish



Street Address:

39 Tinning Street, Brunswick, Victoria, 3056, Australia

Postal Address:

PO BOX 5084 Moreland West VIC 3055

T +61 3 9222 5522

www.elslighting.com.au

