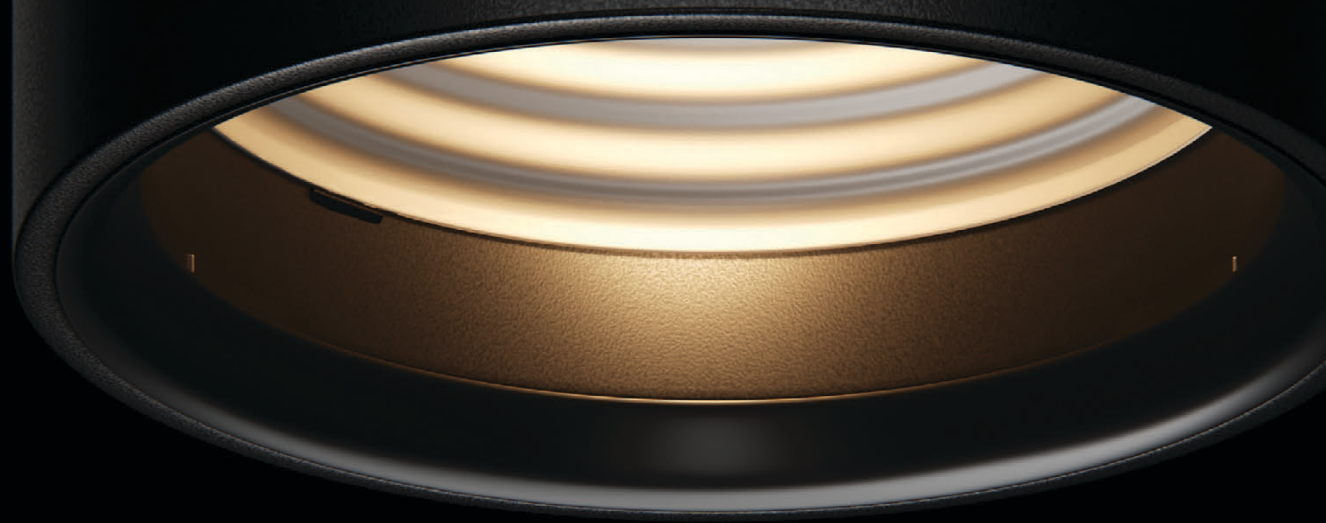




ELS

Customisation like nothing **ELSe.**



LUXIENT™ TRACK SPOTS

2021 **01**



Australian made like nothing ELSE.

The famous Australian Made, Australian Grown (AMAG) logo is the true mark of Aussie authenticity. It's Australia's most trusted, recognised and widely used country of origin symbol, and is underpinned by a third-party accreditation system which ensures products that carry the logo are certified as 'genuinely Australian'.

Efficient Lighting Systems is proud to have the strong backing of the Australian Made campaign for the Luxient Range of Track Spots.

Our commitment to designing and building luminaires that last.

Efficient Lighting Systems understands the importance of creating sustainable, quality luminaires that are built to last. This commitment to designing and producing quality luminaires is controlled through the use of the highest quality components and our strict quality control processes from design through to delivery.

This commitment ensures our luminaires are built to last and this is why we back this claim with a 7 year warranty for the Luxient Range of Track Spots. Our specialty extended 10 year warranty is offered on an individual project basis, upon assessment.

ELS

7
YEAR
WARRANTY

10
YEAR
-EXTENDED-
WARRANTY

Durability like
nothing ELS^e.

Designed and made in Australia for maximum flexibility.

Designed and made in Australia the Luxient Track Spot Range has been designed to maximise turnaround times and flexibility in all areas of output, dimming, optics and finish. No two projects are the same and thus we believe no two lighting solutions should be the same either. The design of the Luxient Track Spot Range ensures that every project can have the right solution for the space.



LUXIENT
TRACK SPOT

Purposeful
design like
nothing ELSE.

FEATURES



01 Control gear is built into track adapter

02 Sleek minimalistic construction

03 Exceptional LED performance

04 New Flexible Optic Lens Technology

01 CONTROL GEAR

- Control gear is built into track adapters available as either non dim, DALI or Casambi
- New Variable Output Technology (VOT) gives the opportunity to optimise exact project requirements for non dimmable, DALI and Casambi versions
- Suitable for most 240V 3 circuit track

02 CONSTRUCTION

- Baffle for maximum glare control
- Sleek minimalistic design
- Made in Australia
- Housing manufactured from precision machined aluminium, powdercoated in satin finish

03 LED MODULE

- Exceptional LED module performance, up to 103lm/w
- Outstanding life figures L90 B10 up to 90,000 hours
- Available as 3000K, 4000K
- 95+ CRI 3000K/4000K
- 2 x SDCM

04 OPTICS

- Available with reflector technology for maximum performance - up to 103lm/w
- Available with NEW Flexible Optic Lens Technology (FOT) enabling more accurate spot optics and maximum flexibility to change and replace optics at any time without tools

NEW Variable Output Technology.

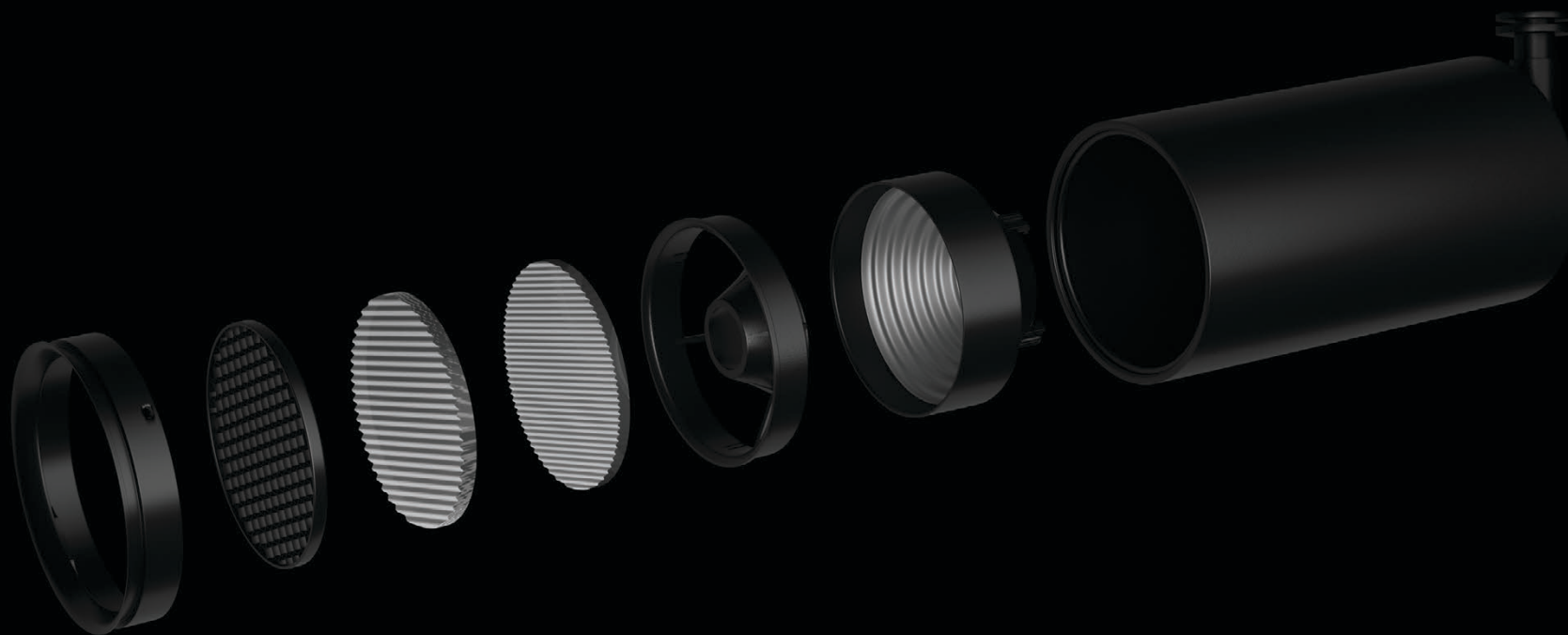
All versions of the Luxient Track Spot are available with Variable Output Technology (VOT).

This provides maximum flexibility and offers the opportunity to optimise exact project requirements and overall power usage of the lighting solution provided. Outputs are preset at the factory, and design files can be provided to ensure lighting designs are accurate.



VARIABLE
OUTPUT

FLEXIBLE OPTICS



NEW Flexible Optic Lens Technology.

The Luxient Track Spot range is available with New Flexible Optic Lens Technology (FOT) enabling more accurate spot optics and maximum flexibility to change and replace optics at any time without tools. The ability to 'mix and match' primary optics with secondary lenses and anti glare accessories offers a truly custom approach to achieving the right lighting solution each and every time.

PRIMARY OPTICS

Replace the distribution of your track spot at anytime

SECONDARY LENSES

Add secondary lenses to change the distribution of your track spot at anytime

ANTI GLARE ACCESSORIES

Add anti-glare accessories at any time to improve visual comfort

Spotlight optics*

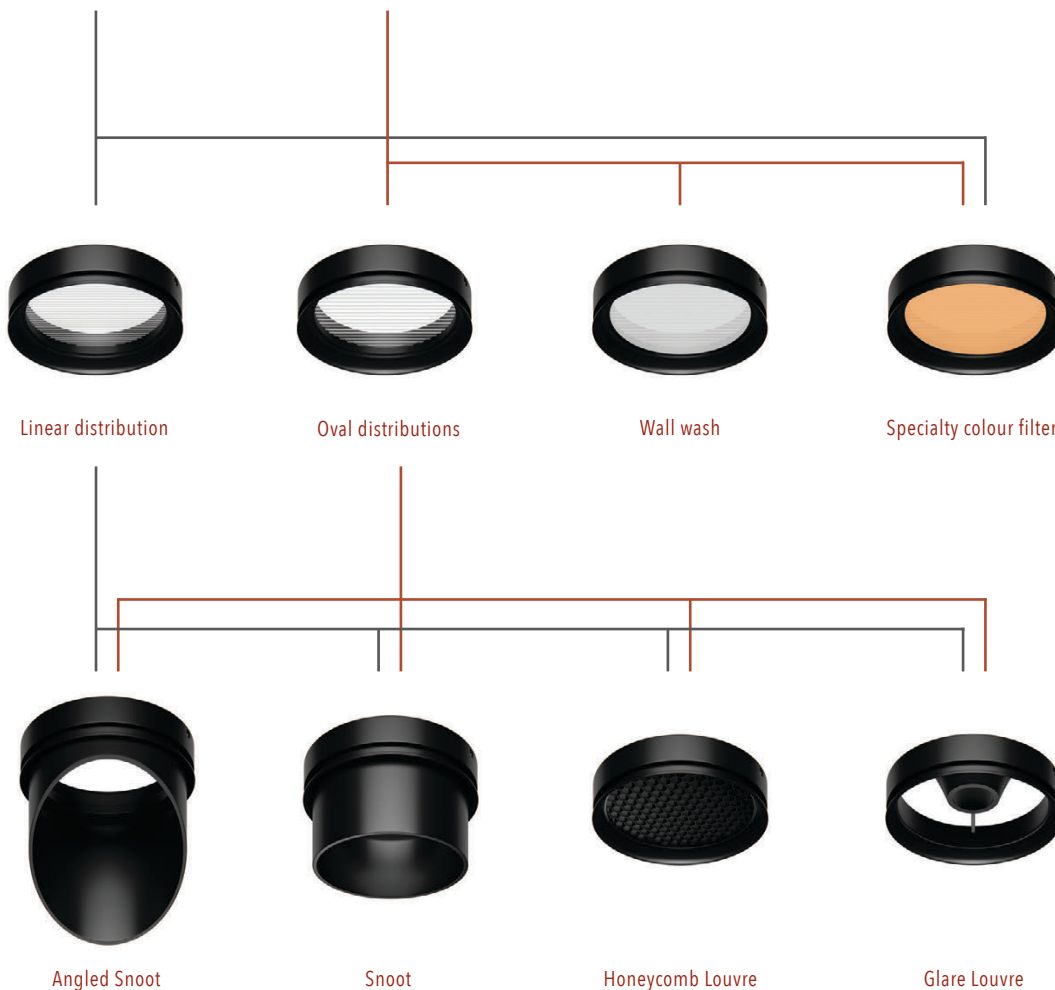


Narrow Spot 12°
Spot 23°
Medium Spot 42°

Floodlight optics*



Medium Flood 54°
Wide Flood 62°



*Primary spotlight optics not interchangeable with primary floodlight optics

LUXIENT 66 TRACK SPOT

60 DIA

LXTR66

Maximum Performance

Reflector Technology

Variable output
8W / 570lm - 14W / 1360lm

- 3000K 95CRI
- 4000K 95CRI

- Medium beam - 24°
- Wide beam - 48°
- Oval beam* - 40°x64°
- Linear beam*

- ND Non dimmable
- DALI dimmable
- CASAMBI dimmable

- Satin White Powdercoat Finish
- Satin Black Powdercoat Finish
- Custom Powdercoat Finish

LXTL66

Maximum Flexibility

Flexible Optic Lens Technology

Variable output
8W / 395lm - 14W / 1175lm

- 3000K 95CRI
- 4000K 95CRI

- Narrow spot - 14°
- Spot - 23° Medium
- Spot - 44°
- Wide spot - 55°
- Oval* - 38°x 57°
- Linear*
- Adjustable - 21° - 46°

- ND Non dimmable
- DALI dimmable
- CASAMBI dimmable

- Satin White Powdercoat Finish
- Satin Black Powdercoat Finish
- Custom Powdercoat Finish

140mm

188mm

60mm

Product
Dimensions

LXT66

LUXIENT 90 TRACK SPOT

80 DIA

LXTR90

Maximum Performance

Reflector Technology

Variable output
8W / 534lm - 20W / 1689lm

- 3000K 95CRI
- 4000K 95CRI

- Narrow beam - 16°
- Medium beam - 29°
- Wide beam - 50°
- Very Wide Beam - 73°
- Oval beam* - 41°x68°
- Linear beam*

ND Non dimmable

 dimmable

CASAMBI dimmable

- Satin White Powdercoat Finish
- Satin Black Powdercoat Finish
- Custom Powdercoat Finish

LXTL90

Maximum Flexibility

Flexible Optic Lens Technology

Variable output
8W / 447lm - 20W / 1491lm

- 3000K 95CRI
- 4000K 95CRI

- Narrow spot - 13°
- Spot - 23°
- Medium spot - 42°
- Medium flood - 54°
- Flood - 62°
- Oval* - 37°x60°
- Linear*

ND Non dimmable

 dimmable

CASAMBI dimmable

- Satin White Powdercoat Finish
- Satin Black Powdercoat Finish
- Custom Powdercoat Finish

150mm

197mm

80mm

Product Dimensions

LXT90



Australian made like nothing ELSE.



Australian made like nothing **ELSe.**

39 Tinning Street, Brunswick, Victoria 3056 T: +61 (0)3 9222 5522 E: sales@elslighting.com.au W: elslighting.com.au

ELS_LTS02/21_CTS

